



COLUMBIA CUP Regatta
August 5-6, 2017
BUOY SAILING INSTRUCTIONS

1. RULES

- 1.1. The regatta will be governed by the rules as defined in *The Racing Rules of Sailing (RRS)*.
- 1.2. In case of a conflict between the Notice of Race and the Sailing Instructions, the Sailing Instructions shall prevail. This changes *RRS 63.7*
- 1.3. US Sailing prescriptions to *RRS 63.2*, and *63.4* will not apply.
- 1.4. *RRS 55* is changed by adding the following sentence to the rule: “However, the use of biodegradable sail stops while setting a sail is permitted.”
- 1.5. *RRS Appendix T* will apply

2. NOTICES TO COMPETITORS

Notices to competitors and scheduled protests will be posted on the Racing Notice Board located on the port side of the rail deck on the Columbia Club ship.

3. CHANGES TO SAILING INSTRUCTIONS

Any change in the Sailing Instructions will be posted on the Racing Notice Board before 0830 CDT on the day it will take effect, except that any change in the schedule of races will be posted by 2000 CDT on the day before it will take effect.

4. SIGNALS MADE ASHORE

- 4.1. Signals made ashore will be displayed from the mast of the Columbia Club Ship and as a courtesy on the event website at www.yachtscoring.com.
- 4.2. Code Flag “AP” means “The race is postponed”. The warning will be made not less than 75 minutes after “AP” is lowered. This modifies *RRS Race Signals*.

5. SCHEDULE OF RACES AND EVENTS

5.1. Schedule of races and events is as follows:

Saturday, August 5	1100	Warning signal for first race Circle 1
	1800	Party at Columbia for all
	1900	Buoy Awards

5.2. One race must be completed to constitute a series.

5.3. Racing will consist of windward/leeward courses with as many races completed as practical.

6. CLASS FLAGS

- 6.1. Boats need not fly class flags while racing.
- 6.2. The class flags for the purpose of signaling the start of each class shall be designated by the international code flags as follows:

Class Flags	1	2	3	4	5	6	7	8
Circle 1	Farr 40	PHRF 1	J/111	Ben 40.7	T-10	J/105	BEN 36.7	J109

- 6.3. Competitors are advised that classes may be combined in the starting order, yet still be scored separately.

7. RACING AREAS and COURSES

- 7.1. CIRCLE 1 will be located at or near LMSRF Area III Starting Area 3 (SA 3). The approximate coordinates are N41°54 and W087°32.
- 7.2. The courses to be sailed will be windward-leeward with 4 to 6 legs. The attached Course Diagram shows a 4 leg course, the courses to be sailed by each class, the order in which marks are to be passed, and the side on which each mark is to be left. The official length of the Course shall be determined by the Race Committee and shall not be grounds for redress
- 7.3. The Course selected, the number legs, the approximate magnetic bearing and distance to the first rounding mark (Marks W1 and W2) will be displayed from a sign-board on the Race Committee Signal Boat with or before the Warning Signal.
- 7.4. The leeward mark (gate) will be approximately 0.10nm to windward of the starting line. If one of the gate marks is absent, then the existing gate mark shall be rounded to port.

8. MARKS

- 8.1. The starting mark will be yellow. The finish mark will be white.
- 8.2. The marks of Course 1 will be orange tetrahedrons, change of course marks will be yellow tetrahedrons. The offset mark, if used, will be an orange tetrahedron.

9. THE START

- 9.1 The class flags are as follows. Competitors should be aware that the starting order may be altered at any subsequent race.

Class Flags	1	2	3	4	5	6	7	8
Circle 1	Farr 40	PHRF 1	J/111	Ben 40.7	T-10	J/105	BEN 36.7	J109

- 9.2 The starting line will be between a staff displaying an orange flag on the Race Committee boat at the starboard end and the course side yellow mark at the port end of the line.
- 9.3 The warning signals described in RRS 26 will be the flags/ pennants listed in 6.2. Competitors should be aware that the Race Committee may elect to combine classes in a start and will signal combined starts by flying class flags in combination.
- 9.4 The Race Committee may set a guard mark attached to the stern of the Signal Boat. A reminder: Yachts shall not pass between the guard mark and the RC boat, the guard mark if present is considered an extension of the signal boat. This changes definition of marks.

9.5 The Race Committee may change a course after the first class has started for any classes not yet started in accordance with RRS 27 and RRS 33, by:

- a. Displaying flag (C) no later than the next warning signal and
- b. Displaying the new course signal at or before the preparatory signal. This alters 27.1.

10. RECALLS

In the event of an individual recall, the sail numbers or identification of any boat or boats that are identified as OCS may be announced on the Race Committee VHF channel 78 for racing Circle 1. Failure of a boat to see or hear her recall notification, and the timing and order of such hails, or the length of time it takes to make a notification on the VHF radio will not be grounds for redress. (This changes RRS 29.1 and 62.1 (a).)

11. THE FINISH

- 11.1. The Finish Line will be between a staff displaying a blue flag on the Race Committee Signal Boat and a white finishing mark.
- 11.2. For downwind finishes, the Finish Line will be on the side opposite of the Race Committee Signal Boat from the Starting Line. For upwind finishes, the Finish Line will be on the port side of the RC Boat coming from the last mark. For windward finishes, the finish line will be approximately 0.10nm to windward of Mark W2.

12. PENALTY SYSTEM, PROTEST AND REQUEST FOR REDRESS

- 12.1. The Protest Desk will be located on rail deck of COLYC club ship. Protest forms will be available at the Protest Desk. Protests shall be delivered to the Protest Desk within the protest time limit.
- 12.2. The Protest Time Limit is sixty (60) minutes after the Race Committee Signal Boat for your circle has docked. This changes rule 61.3
- 12.3. Notices will be posted near the Protest Desk as soon as possible to inform competitors of hearings in which they are a party or named as witnesses. Notices of protests by the race committee or protest committee will be posted to inform boats under Rule 61.1(b).
- 12.4. On the last day of the regatta a request for reopening a hearing shall be delivered
 - a. within the protest time limit if the party requesting reopening was informed of the decision on the previous day;
 - b. no later than 30 minutes after the party requesting reopening was informed of the decision on that day. This changes rule 66.
- 12.6 For the T-10 Class, RRS 44.1 is changed so that, except for infringements of Part 2 that occur within three boat lengths of a rounding mark, finishing mark, or boat-to-boat contact, only one turn, including one tack and one gybe, is required.

13. TIME LIMIT

- 13.1. Any race in which no boat rounds the first windward mark within 45 minutes, or finishes within two and a half (1½) hours of the start shall be abandoned. Any boats not finishing within 45 minutes of the finish time of the first boat will be scored TLE (Time Limit Expired). This changes RRS 35.
- 13.2. If a boat in last place in a race is delaying the next start, the race committee may order the race terminated for that boat, and score the boat points equal to last place.

14. SCORING

- 14.1. The Low Point Scoring System, Appendix A, will apply. Each boat's series score will be the total score of all her races. There will be no discards, modifying Rule A2.

14.2. PHRF Class. Time-on-Distance using the PHRF Buoy rating will be utilized.

14.3. Boats scored TLE (Time Limit Expired) shall be awarded two points more than the number of boats that finished within 45 minutes of the first boat. This changes *RRS* A4.1 and A4.2.

15. WITHDRAWAL

Boats that retire from a race or do not intend to start a subsequent race shall notify the Race Committee before leaving the race course. Boats that cannot communicate with the Race Committee, shall call Columbia Yacht Club at 312-939-3625 (312-WET-DOCK), as soon as possible.

16. RACE COMMITTEE COURTESY BROADCASTS

The Race Committee may attempt to report visual signals displayed and other pertinent information over Channel 78 VHF for racing Circle1 (or an alternate channel as directed by the Race Committee). This information is provided as a courtesy to competitors and does not in any way alter their responsibility to observe the Race Committee's visual signals which govern the conduct of the race. Errors or omissions involving such courtesy broadcasts shall not be grounds for redress.

17. DOCKING

There will be a limited amount of complimentary dockage available at Columbia YC from 1500 hrs, Friday, August 4 through Sunday, August 6. This dockage will be in a side tie configuration on the East and South (Outer) sides of the dock.

18. PRIZES

Prizes will be awarded to the top three boats in each class of four or more boats.

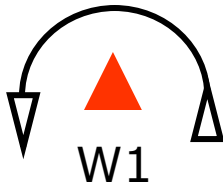
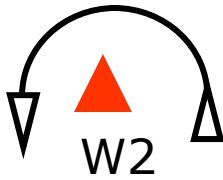
19. DISCLAIMER OF LIABILITY

Competitors participate in the regatta entirely at their own risk. See *RRS* 4, Decision to Race. The race organizers (OA, Race Committee, Protest Committee, sponsors, or any other organization or official) will not accept any liability for material damage or personal injury or death sustained in conjunction with or prior to, during, or after the regatta. By participating in this race, each competitor agrees to release the race organizers from any and all liability associated with such competitor's participation in this event to the fullest extent permitted by law.

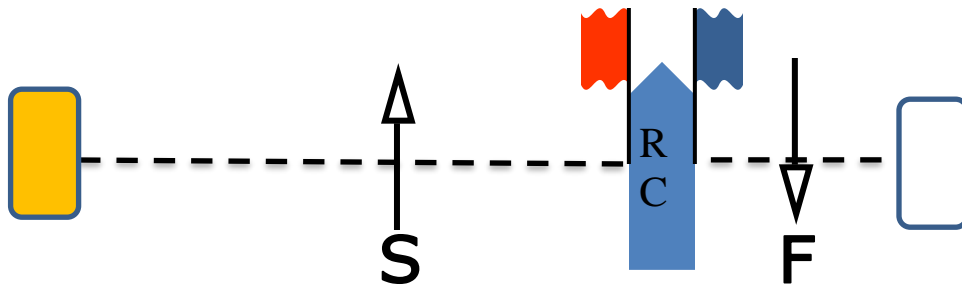
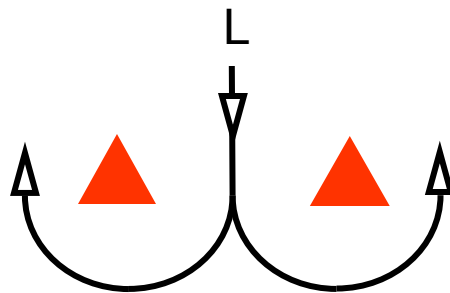
20. INSURANCE

Each participating boat shall be insured with valid third-party liability insurance with a minimum cover of \$300,000 per event or the equivalent.

BUOY COURSE DIAGRAM



NOT TO SCALE



Not to Scale, Mark colors may not be accurate

SAILING INSTRUCTIONS
Columbia Cup Regatta 2017
Distance Race

1. RULES

- 1.1. The regatta will be governed by the rules as defined in *The Racing Rules of Sailing* (RRS), except as these are changed by this Sailing Instructions.
- 1.2. In case of a conflict between the Notice of Race and the Sailing Instructions, the Sailing Instructions shall prevail. This changes RRS 63.7
- 1.3 US Sailing prescriptions 63.2, and 63.4 will not apply.
- 1.4. RRS Appendix T will apply

2. NOTICES TO COMPETITORS

Notices to competitors and scheduled protests will be posted on the Racing Notice Board located on the port side of the rail deck on the Columbia Club ship and as a courtesy on the event website at www.yachtscoring.com.

3. CHANGES TO SAILING INSTRUCTIONS

Any change in the Sailing Instructions will be posted on the Racing Notice Board before 0830 CDT on the day it will take effect, except that any change in the schedule of races will be posted by 2000 CDT on the day before it will take effect.

4. SIGNALS MADE ASHORE

- 4.1. Signals made ashore will be displayed from the stern mast of the Club Ship.
- 4.2. Code Flag “AP” means “The race is postponed”. The warning will be made not less than 75 minutes after
“AP” is lowered. This modifies RRS Race Signals.

5. SCHEDULE OF RACES AND EVENTS

Schedule of races and events is as follows:

Sunday, August 6	1100	First Warning
	1600	Party for all
	1700	Distance Awards

6. SECTION BREAK and CLASS FLAGS

6.1. The Section Breaks are shown in the Table below:

Farr 40	PHRF 1	J/111	Ben 40.7	T-10	J/105	BEN 36.7	J109
---------	--------	-------	-------------	------	-------	-------------	------

6.2. Competitors are advised that classes may be combined in the starting order, but be scored separately.

7. RACING AREA and COURSES

- 7.1. Addendum A shows the courses, the order in which marks are to be rounded and the side on which each mark is to be left.
- 7.2. No later than the warning signal for each class, the race committee signal boat will display the course letter on a course board for the respective class.
- 7.3. In the event that the Race Committee is not on station at the finish line, finishing yachts shall follow the procedure outlined in the US Sailing prescription to RRS 34 as modified. The last sentence of the US Sailing prescription to RRS 34 is modified to read:

*"If a boat finishes when the race committee is absent, to be scored as finishing she shall
1. Note her finishing time. The finish time shall be the GPS CDT time when the alternate
finish line is crossed.*

*2. Notify the RC, on Channel 78, of their finish time (GPS CDT time) as soon as practical
after finishing or email their finish time to racemgt@colyc.com".*

8. MARKS

The starting mark will be a yellow mushroom. The marks of the distance race will be fixed navigation marks. The finish mark will be a white mushroom.

9. THE START

9.1. The starting sequence is as follows

Sequences	2	2	2	2	1	1	1	1
	Farr 40	PHRF 1	J/111	Ben 40.7	T-10	J/105	BEN 36.7	J109

9.2. The Race Committee may elect to combine classes in a start and will signal combined starts by flying class flags in combination.

9.3. The starting line will be between a staff displaying an orange flag on the Race Committee boat at the starboard end and a yellow tetrahedron at the port end of the line.

9.4. The Race Committee may set a guard mark attached to the stern of the Signal Boat. Yachts shall not pass between the guard mark and the RC boat.

10. RECALLS

In the event of an individual recall, the sail numbers or identification of any boat or boats that are identified as OCS may be announced on the Race Committee VHF channel 78. Failure of a boat to see or hear her recall notification, and the timing and order of such hails, or the length of time it takes to make a notification on the VHF radio will not be grounds for redress. (This changes RRS 29.1 and 62.1 (a).)

11. THE FINISH

The Finish Line will be between a staff displaying an orange flag on a Race Committee Signal Boat and an orange finishing mark.

12. PENALTY SYSTEM, PROTEST AND REQUEST FOR REDRESS

12.1. The Protest Desk will be located on the raildeck of COLYC club ship. Protest forms will be available at the Protest Desk. Protests shall be delivered to the Protest Desk within the protest time limit.

12.2. The Protest Time Limit is sixty (60) minutes after the Race Committee Signal Boat has docked. This changes RRS 61.3

12.3. Notices will be posted near the Protest Desk as soon as possible to inform competitors of hearings in which they are a party or named as witnesses.

12.4. Notices of protests by the race committee or protest committee will be posted to inform boats under
Rule 61.1(b).

13. SCORING

13.1 The Low Point Scoring System, Appendix A, will apply.

13.2 Time-on-distance scoring will be utilized.

13.3 Boats scored TLE (Time Limit Expired) shall be awarded two point more than the number of boats that finished within the time limit. This changes *RRS* A4.1 and A4.2.

14. TIME LIMIT

The time limit will be 1600 hrs. Any boats not finishing within the time limit will be scored TLE (Time Limit Expired). This changes *RRS* 35.

15. WITHDRAWAL

Boats that retire from the race shall notify the Race Committee before leaving the race course. Boats that cannot communicate with the Race Committee, shall call Columbia Yacht Club at 312-939-3625 (312-WET- DOCK), as soon as possible.

16. RACE COMMITTEE COURTESY BROADCASTS

The Race Committee may attempt to report visual signals displayed and other pertinent information over VHF Channel 78 VHF. The Race Committee may change the channel by posting on a signboard on the signal boat prior to the first warning signal of each race. This information is provided as a courtesy to competitors and does not in any way alter their responsibility to observe the Race Committee's visual signals which govern the conduct of the race. Errors or omissions involving such courtesy broadcasts shall not be grounds for redress.

17. DOCKING

There will be a limited amount of complimentary dockage available at Columbia YC from 1500 hrs, Friday, June 3 through Sunday, June 5. This dockage will be in a side tie configuration on the East and South (Outer) sides of the dock.

18. PRIZES

Prizes will be awarded to the top three boats in each class with 4 or more finishers.

19. DISCLAIMER OF LIABILITY

Competitors participate in the regatta entirely at their own risk. See *RRS* 4, Decision to Race. The race organizers (OA, Race Committee, Protest Committee, sponsors, or any other organization or official) will not accept any liability for material damage or personal injury or death sustained in conjunction with or prior to, during, or after the regatta. By participating in this race, each competitor agrees to release the race organizers from any and all liability associated with such competitor's participation in this event to the fullest extent permitted by law.

20. INSURANCE

Each participating boat shall be insured with valid third-party liability insurance with a minimum cover of \$300,000 per event or the equivalent.

DISTANCE COURSE ADDENDUM A

COURSE A				
Start				41-53.4N 87-32.0W
<i>A gate bounded by; Clemson Shoal Lighted Bell(CLSB) Buoy 4 and an Orange Mark placed about 100 yards east of CSLB buoy 4</i>	19910		5.0	41-48.4N 87-32.0W
68th Street Crib Light	19870	Mark to port	1.2	41-47.2N 87-31.9W
<i>A gate bounded by; Clemson Shoal Lighted Bell(CLSB) Buoy 4 and an Orange Mark placed about 100 yards east of CSLB buoy 4</i>	19910		1.2	41-48.4N 87-32.0W
Finish		East to west	5.0	41-53.4N 87-32.0W
			12.4	

COURSE B				
Start				41-53.4N 87-32.0W
Wilson Ave Intake Crib Light	20135	Mark to port	5.29	41-58.0N 87-35.5W
<i>A gate bounded by; Clemson Shoal Lighted Bell(CLSB) Buoy 4 and an Orange Mark placed about 100 yards east of CSLB buoy 4</i>	19910		9.95	41-48.4N 87-32.0W
68th Street Crib Light	19870	Mark to starboard	1.2	41-47.2N 87-31.9W
<i>A gate bounded by; Clemson Shoal Lighted Bell(CLSB) Buoy 4 and an Orange Mark placed about 100 yards east of CSLB buoy 4</i>	19910		1.2	41-48.4N 87-32.0W
Finish		East to west	5.0	41-53.4N 87-32.0W
			22.72	

SAILING INSTRUCTIONS
COLUMBIA CUP OVERALL 2017

1. RULES

The regatta will be governed by the rules as defined in *The Racing Rules of Sailing*.

2. ELIGIBILITY AND ENTRY

All boats shall compete in both the Buoy and Distance racing to be eligible to win the Columbia Cup.

3. SCHEDULE

Buoy Race

Saturday, August 5	1100	Warning Signal
	1800	Party
	1900	Buoy Awards

Distance Race

Sunday, August 6	1100	Warning Signal
	1600	Party
	1700	Distance Awards
	1730	Columbia Cup Awarded

4. SCORING

Scoring for the Columbia Cup will be determined by combining the course racing and distance scores which will have an equalizing factor applied.

5. FURTHER INFORMATION

Regatta Chair

Mike Hettel

Michael.e.hettel@gmail.com